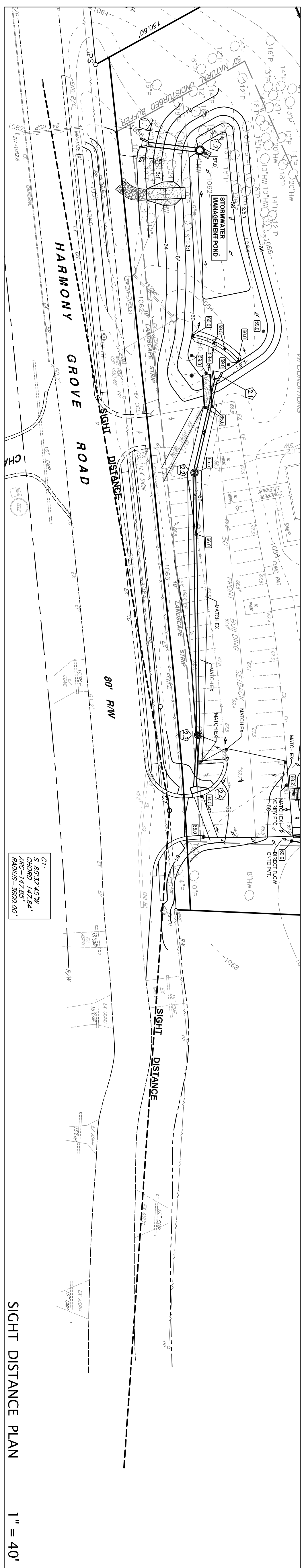


C1:
S 85°32'45\"/>

ENTRANCE DETAILS

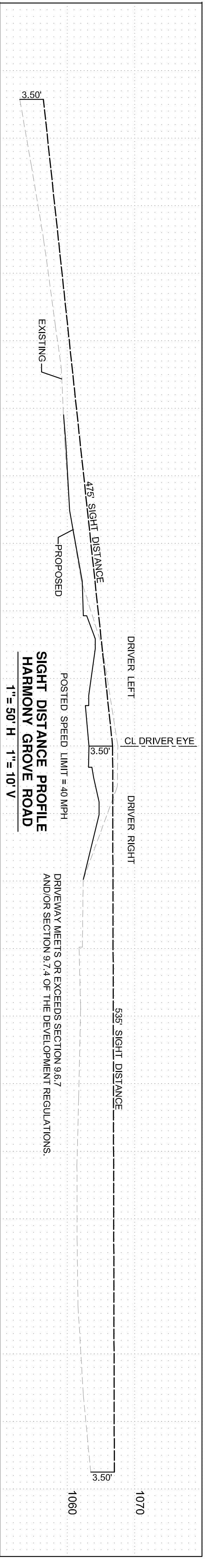
1" = 20'



SIGHT DISTANCE PLAN

1" = 40'

C1:
S 85°32'45\"/>



SIGHT DISTANCE PROFILE
HARMONY GROVE ROAD

1" = 50' H. 1" = 10' V.

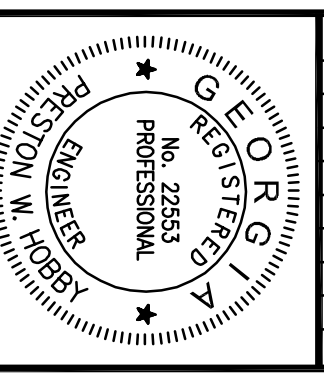
ENTRANCE
DETAILS
C3.3

A NEW FELLOWSHIP BUILDING
Greater Atlanta Vedic Temple
492 HARMONY GROVE ROAD LILBURN, GA 30247
LL 115 - 6TH DISTRICT PARCEL 019A
GWINNETT COUNTY, GEORGIA

OWNER - DEVELOPER
Greater Atlanta Vedic Temple Society
2189 SPENCERS WAY
STONE MOUNTAIN, GA 30087
PHONE: 678-662-6895

PWH ENGINEERING CIVIL ENGINEERING
SITE DEVELOPMENT
3583 SOUTH COBB DRIVE • SMYRNA, GA 30080 • PH: 770-433-8190 • FAX: 770-433-8190
ISSUE FOR PERMIT: 01-27-09
JOB No. 08180 | SCALE:

CSMCC LEVEL II - 0000008888
COPYRIGHT: PWH ENGINEERING, INC.
THIS DRAWING AND DESIGN SHALL
REPRODUCE OR BE REPRODUCED,
WHOLE OR IN PART, WITHOUT PERMISSION
FROM THE ENGINEER.



DATE	REVISIONS
03-01-10	REVISED PER COUNTY COMMENTS
05-28-10	REVISED PER COUNTY COMMENTS
07-01-10	REVISE DECEL LANE PER COUNTY COMMENTS
03-10-11	REVISED PER COUNTY COMMENTS
04-18-11	REVISED PER COUNTY COMMENTS ADD MODIFICATION NOTE