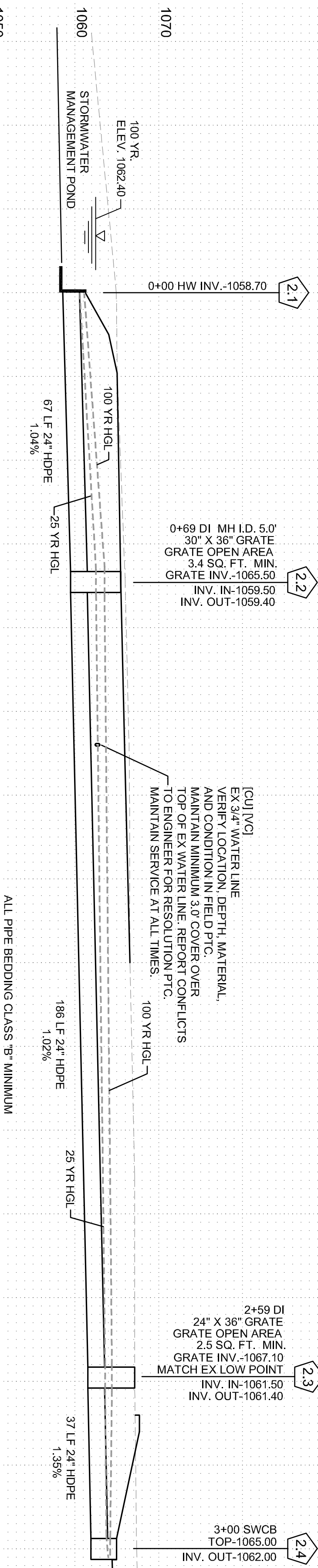


PIPE DESIGN DATA				
Struct	Area(Ac)	Top(m)	C	Q(cfs)
1.3 OGS	4.88	DET.	9.1(25)	19
1.2 JIB				19
1.1 HW				19
2.1 CB	0.65		0.60 (10.8(10))	5.5
2.2 DI	0.02		0.85 (10.8(10))	2.2
2.3 DI	1.3		0.80 (10.8(10))	12.3
2.1 HW				18.0
				24
				5.2

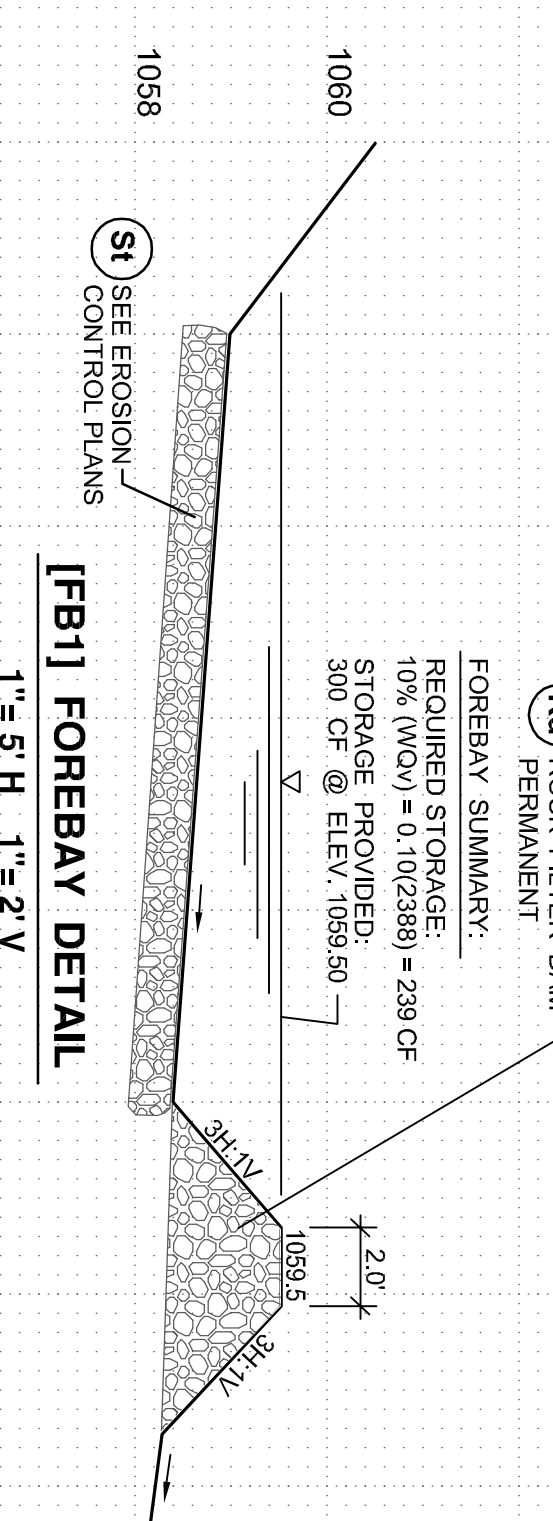
- PROFILE LEGEND:
- 1. EXISTING
  - 2. PROPOSED
  - 3. HW - HEADWALL
  - 4. JB - JUNCTION BOX
  - 5. DI - DROP INLET
  - 6. DWCS - DOUBLE WING CATCH BASIN
  - 7. SWCS - SINGLE WING CATCH BASIN
  - 8. DPC - DUCTILE IRON PIPE
  - 9. BCCMP - BITUM. COATED PIPE
  - 10. RCP - REINFORCED CONC. PIPE
  - 11. SSMH - SM. SEWER MANHOLE

**STORM SEWER NOTES:**

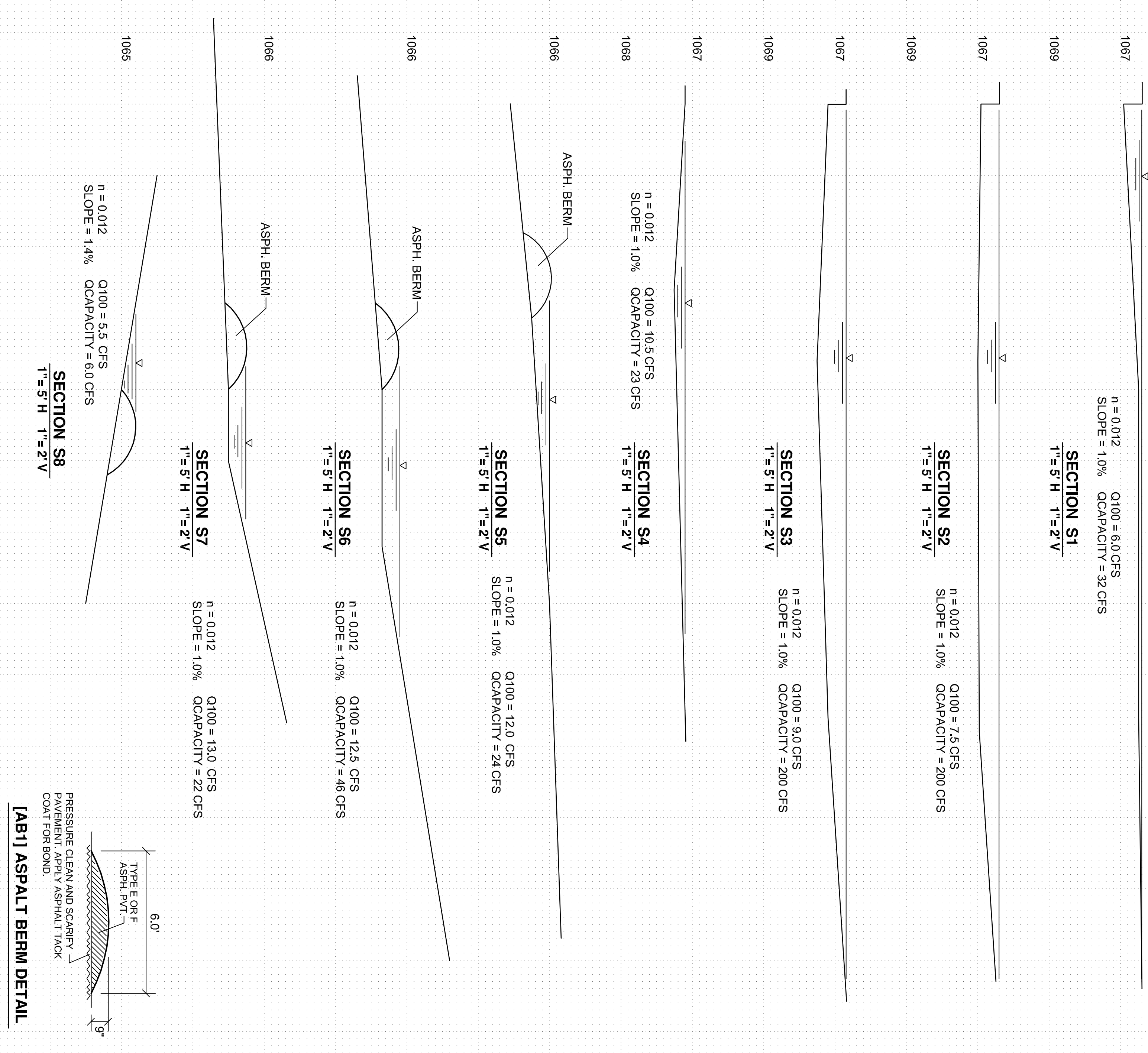
1. ALL MATERIALS AND CONSTRUCTION SHALL CONFORM TO MINIMUM TO GWINNETT COUNTY AND GEORGIA DOT SPECIFICATIONS UNLESS NOTED OTHERWISE.
2. ALL PIPE SHALL BE MANUFACTURED IN ACCORDANCE WITH ASTM M-88 TYPE 1 UNLESS NOTED OTHERWISE.
3. ALL PIPE GALVANIZED SHALL CONFORM TO GEORGIA DOT STANDARD SPECIFICATIONS.
4. MINIMUM PIPE BEDDING FOR ALL PIPE IS CLASS "B" UNLESS NOTED OTHERWISE.
5. HOPE PIPE SPECIFICATIONS:
- 5.1 ALUMINUM COATED TYPE 2 STEEL OR ALUMINUM ALLOY PIPE SPECIFICATIONS.
- 5.2 RCP PIPE SPECIFICATIONS:
- 5.3 RCP JOINTS SHALL BE BELL & SPIGOT TYPES WITH A RUBBER GASKET CONFORMING TO ASTM C-443. THE PIPE SHALL BE MANUFACTURED IN ACCORDANCE WITH ASTM M-70 AND/OR ASTM C-76 CLASS OF PIPE AND WALL THICKNESS SHALL BE IN ACCORDANCE WITH 1039-D, GEORGIA DOT SPECIFICATION TABLE NO. 1. INSTALLATION SHALL BE IN ACCORDANCE WITH SECTION 550 OF THE GEORGIA DOT STANDARD SPECIFICATIONS CONSTRUCTION OF ROADS AND BRIDGES.



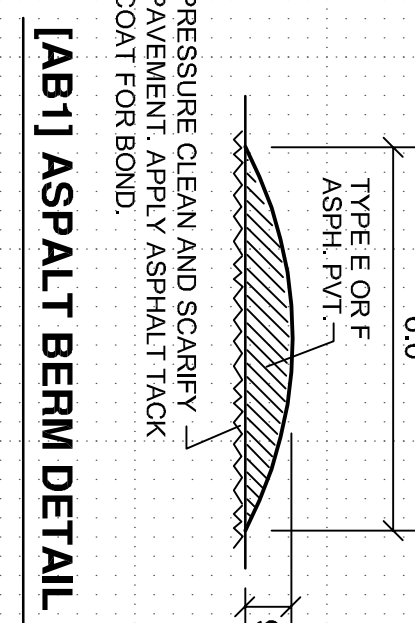
ALL PIPE BEDDING CLASS "B" MINIMUM  
**STORM SEWER LINE 2**  
 1"=20' H 1"=10' V



**[FB1] FOREBAY DETAIL**  
 1"=5' H 1"=2' V

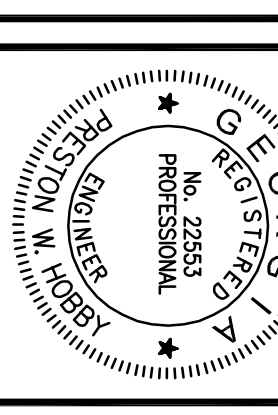


**SECTION S8**  
 1"=5' H 1"=2' V



**[AB1] ASPHALT BERM DETAIL**

DATE	REVISIONS
03-01-10	REVISED PER COUNTY COMMENTS
05-28-10	REVISED PER COUNTY COMMENTS
07-01-10	REVISE DECEL LANE PER COUNTY COMMENTS
03-10-11	REVISED PER COUNTY COMMENTS
04-18-11	REVISED PER COUNTY COMMENTS ADD MODIFICATION NOTE



CSMC LEVEL II - 000008888  
 COPYRIGHT: FWH ENGINEERING, INC.  
 THIS DRAWING AND DESIGN SHALL  
 BE REPRODUCED OR RELEASED  
 WITHOUT WRITTEN PERMISSION  
 FROM THE ENGINEER.

**PWH ENGINEERING** CIVIL ENGINEERING SITE DEVELOPMENT  
 3583 SOUTH COBB DRIVE • SMYRNA, GA 30080 • PH: 770-433-8190 • FAX: 770-433-8190

ISSUE FOR PERMIT: 01-27-09  
 JOB No. 08180 | SCALE:

OWNER - DEVELOPER  
**Greater Atlanta Vedic Temple Society**  
 2189 SPENCERS WAY  
 STONE MOUNTAIN, GA 30087  
 PHONE: 678-662-6895

**A NEW FELLOWSHIP BUILDING**  
**Greater Atlanta Vedic Temple**  
 492 HARMONY GROVE ROAD LILBURN, GA 30247  
 LL 115 - 6TH DISTRICT PARCEL 019A  
 GWINNETT COUNTY, GEORGIA

STORM SEWER PROFILES  
**C3.1**