

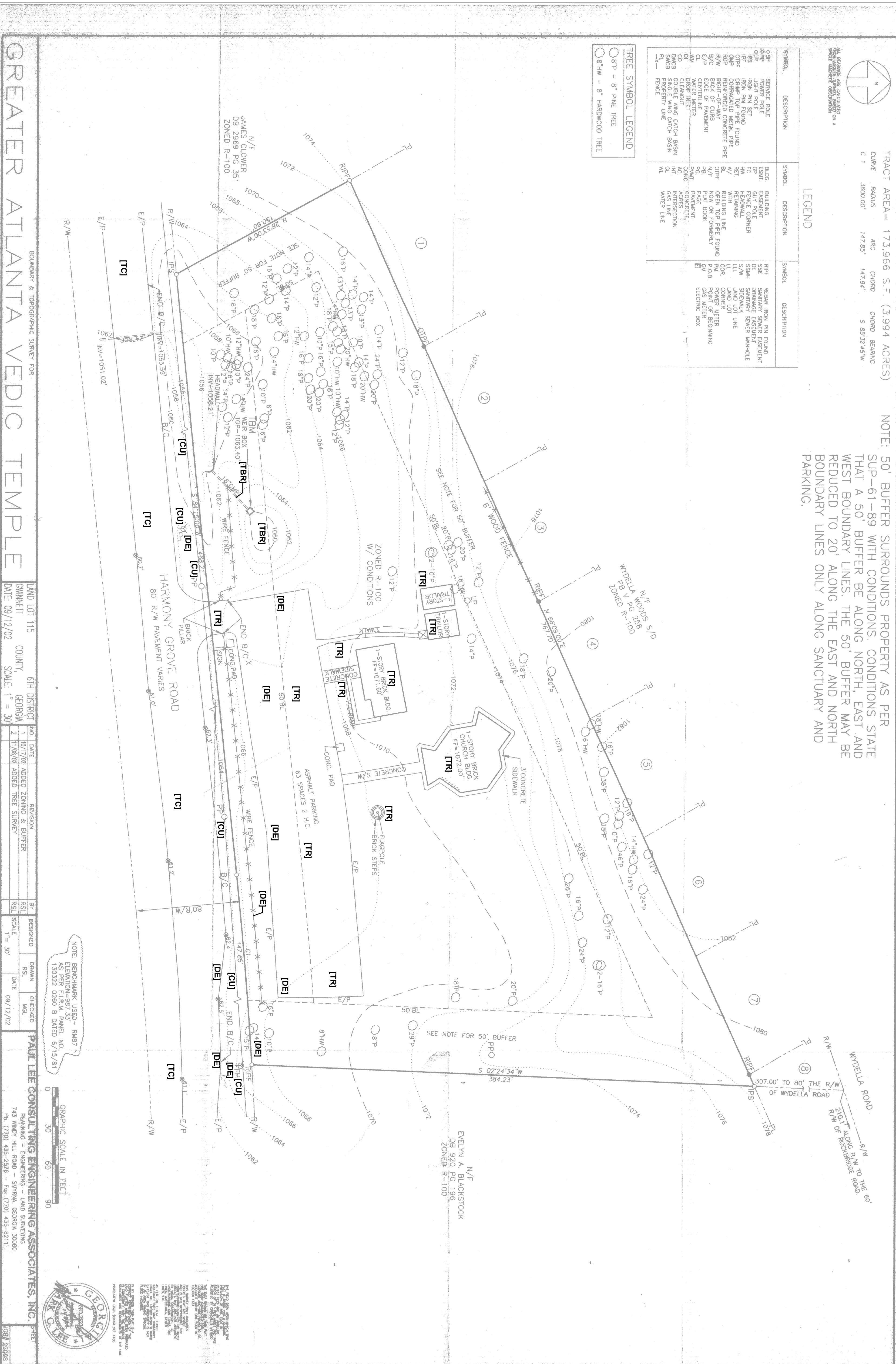
TRACT AREA= 173,966 S.F. (3.994 ACRES)
 CURVE RADIUS 14728'
 CHORD BEARING S 83°32'45"W
 CHORD 14728'

LEGEND

SYMBOL	DESCRIPTION	SYMBOL	DESCRIPTION	SYMBOL	DESCRIPTION
SP	SEWER POLE	BL	BUILDING	RF	REAR ROW PA FOUNDATION
OP	OPEN POLE	ES	EXISTING	DF	DRIVE FOUNDATION
LP	LIGHT POLE	GP	GRASS	DE	DECK FOUNDATION
RP	REINFORCED CONCRETE PIPE	HW	HEADWALL	SM	SEWER MANHOLE
CP	CONCRETE PIPE	RT	RETAINING	S/W	SEWER WORK
WP	WATER PIPE	BL	BUILDING LINE	LL	LAND LOT
BP	BACK OF CURB	OP	OPEN TOP PIPE FOUNDATION	CL	CORNER
EP	EDGE OF PAVEMENT	PL	PLAT BOOK	PA	POWER METER
EL	ELECTRIC LIGHT	PI	PLAT INTERSECTION	GM	GAS METER
WM	WATER METER	PC	CONCRETE	EB	ELECTRIC BOX
DB	DOUBLE	CI	CONCRETE INTERSECTION		
DM	DOUBLE MING CATCH BASIN	LI	LAND LOT INTERSECTION		
DMCB	DOUBLE MING CATCH BASIN	ML	MAINT LINE		
PC	PROJECT	ML	MAINT LINE		
PC	PROJECT	ML	MAINT LINE		
PC	PROJECT	ML	MAINT LINE		

FREE SYMBOL LEGEND
 ○ 8" P - 8" PINE TREE
 ○ 8" HW - 8" HARDWOOD TREE

NOTE: 50' BUFFER SURROUNDS PROPERTY AS PER SUP-61-89 WITH CONDITIONS. CONDITIONS STATE THAT A 50' BUFFER BE ALONG NORTH, EAST AND WEST BOUNDARY LINES. THE 50' BUFFER MAY BE REDUCED TO 20' ALONG THE EAST AND NORTH BOUNDARY LINES ONLY ALONG SANCTUARY AND PARKING.

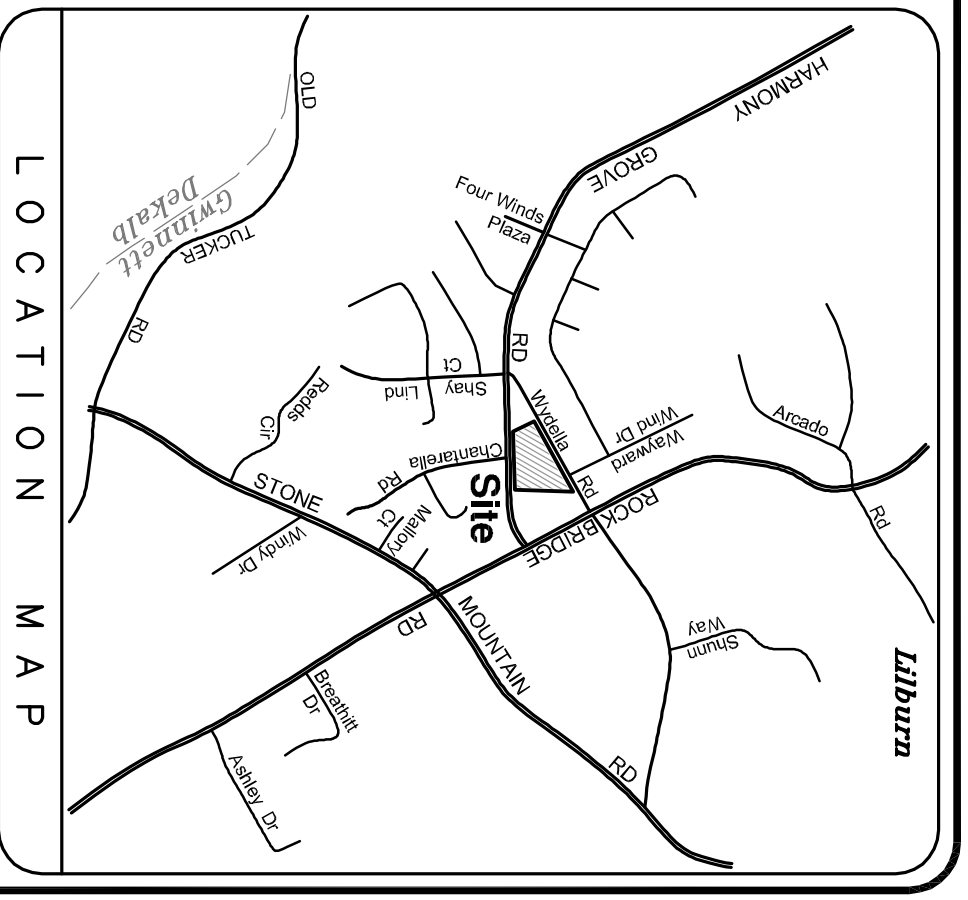


GREATER ATLANTA VEDIC TEMPLE

LAND LOT 115	6TH DISTRICT	NO. DATE	REVISION
WINNETT COUNTY, GEORGIA	1	10/17/02	ADDED ZONING & BUFFER
SCALE: 1" = 30'	2	11/28/02	ADDED TREE SURVEY
DATE: 09/12/02	3	09/12/02	ADDED TREE SURVEY

PAUL LEE CONSULTING ENGINEERING ASSOCIATES, INC.

130322 0280 B DATED 6/15/81



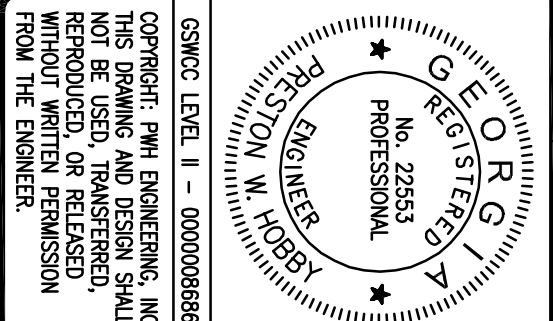
DEMOLITION NOTES:

1. CONTRACTOR IS RESPONSIBLE FOR LOCATION, VERIFICATION, PROTECTION, MAINTENANCE, RELOCATION, REMOVAL OR RENOVATION OF ALL EXISTING UTILITIES, SITE IMPROVEMENTS, STRUCTURES, OBJECTS, OR CONSTRUCTION ELEMENTS REQUIRED TO COMPLETE THE WORK SHOWN ON THE PLANS. NOTES, SPECIFICATIONS, AND CONTRACT DOCUMENTS WHETHER SHOWN ON THE PLANS OR NOT, ITEMS SHOWN AS [DE], [TR], [TRB], OR OTHERWISE [] DESIGNATED ARE SHOWN FOR GENERAL REFERENCE ONLY, AND ARE NOT ALL INCLUSIVE. THE CONTRACTOR IS RESPONSIBLE FOR ALL ITEMS TO BE REMOVED [TRB], ALL ITEMS TO REMAIN [TR], AND ALL ITEMS REQUIRING DEMOLITION [DE]. WHETHER DESIGNATED ON THE PLANS OR NOT, THE CONTRACTOR SHALL VISIT THE SITE AND BECOME FAMILIAR WITH ALL EXISTING IMPROVEMENTS AND CONDITIONS PRIOR TO BIDDING AND CONSTRUCTION.
2. CONTRACTOR SHALL COORDINATE AND VERIFY ALL UTILITIES AND STRUCTURES TO BE REMOVED WITH THE OWNER OR OWNERS REPRESENTATIVE PRIOR TO CONSTRUCTION.
3. REFER TO ARCHITECTURAL DRAWINGS AND SPECIFICATIONS FOR EXISTING AND PROPOSED BUILDING DEMOLITION, REMOVAL, AND RENOVATION.
4. CONTRACTOR SHALL:
 - CONTACT UPC (UTILITIES PROTECTION CENTER) FOR LOCATION OF ALL EXISTING UTILITIES PRIOR TO CONSTRUCTION. UTILITIES ARE SHOWN ACCORDING TO INFORMATION AVAILABLE AND MAY NOT BE ACCURATE. UTILITIES MAY EXIST WHICH ARE NOT SHOWN ON PLANS. OBTAIN APPROVAL FROM ALL LOCAL UTILITY AUTHORITIES AND LOCATE, VERIFY, AND COORDINATE ALL REQUIRED CONSTRUCTION FOR ALL UTILITIES WITHIN THE WORK AREA. MAINTAIN UTILITY SERVICES AT ALL TIMES.
 - COORDINATE CONSTRUCTION SERVICES ACCORDING TO THE SPECIFICATIONS AND NOTES ON THE PLANS. ALL IMPROVEMENTS, INCLUDING LANDSCAPING, NOT REQUIRING REMOVAL, DAMAGED IMPROVEMENTS SHALL BE RESTORED AT CONTRACTORS EXPENSE.
 - CONTRACTOR SHALL HAVE PROPERTY CORNERS, RIGHT-OF-WAY, AND BOUNDARY MARKED AND LOCATED DO NOT ENCROACH ON ADJACENT PROPERTIES.
 - CONTRACTOR SHALL COORDINATE ALL DEMOLITION ADJACENT TO STRUCTURES OR FOUNDATION ELEMENTS WITH THE ARCHITECT AND STRUCTURAL ENGINEER TO ENSURE THAT NO DAMAGE OR DEGRADATION WILL OCCUR.
 - CONTRACTOR SHALL BLEND NEW CONSTRUCTION INTO EXISTING IMPROVEMENTS. ALL JUNCTIONS, COMMON POINTS, JOINTS, ETC. SHALL BE BLENDED FOR A SMOOTH TRANSITION. ALL DAMAGED IMPROVEMENTS SHALL BE RESTORED BY THE CONTRACTOR TO ORIGINAL CONDITION AT NO EXPENSE TO THE CONTRACTOR.
 - CONTRACTOR IS RESPONSIBLE FOR THE SAFETY OF THE PUBLIC AND ALL OTHER PERSONS ON SITE AT ALL TIMES. THE CONTRACTOR SHALL CONFORM TO ALL FEDERAL, STATE, AND LOCAL SAFETY REQUIREMENTS AND REGULATIONS.

DEMOLITION LEGEND:

- [TR] TO REMAIN:**
 EXISTING IMPROVEMENT OR ITEM TO REMAIN. LOCATE, VERIFY, MARK, AND PROTECT FROM DAMAGE BY ALL NECESSARY MEANS. FOR UTILITIES, MAINTAIN SERVICE AT ALL TIMES.
- [TRB] TO BE REMOVED:**
 EXISTING IMPROVEMENT OR ITEM TO BE REMOVED. LOCATE, VERIFY, AND REMOVE. DISPOSE OF OFF SITE IN A LEGAL MANNER. FOR UTILITIES, MAINTAIN SERVICE AT ALL TIMES. COORDINATE ALL UTILITY REMOVAL OR ALTERATION WITH APPROPRIATE UTILITY AUTHORITY.
- [CU] COORDINATE UTILITIES:**
 CONTACT UTILITY LOCATION AUTHORITY AND VERIFY ALL UTILITIES PRIOR TO CONSTRUCTION. COORDINATE ALL EXISTING AND PROPOSED UTILITY CONSTRUCTION, REMOVAL, ALTERATION, RENOVATION, OR RELOCATION REQUIRED TO COMPLETE THE WORK WITH APPROVAL OF THE APPROPRIATE UTILITY AUTHORITY. RESOLVE ALL CONFLICTS, OMISSIONS OR DISCREPANCIES PRIOR TO CONSTRUCTION.
- [DE] DEMOLITION REQUIRED:**
 DEMOLITION, RELOCATION, PARTIAL REMOVAL, OR ALTERATION REQUIRED. CONFORM TO APPLICABLE ARCHITECTURAL AND/OR RELATED ENGINEERING PLANS AND SPECIFICATIONS. COORDINATE UTILITIES AND OBTAIN APPROVAL PRIOR TO DISTURBANCE WITH APPROPRIATE AUTHORITY.

DATE	REVISIONS
03-01-10	REVISED PER COUNTY COMMENTS
05-28-10	REVISED PER COUNTY COMMENTS
07-01-10	REVISED DECEL LANE PER COUNTY COMMENTS
03-10-11	REVISED PER COUNTY COMMENTS
04-18-11	REVISED PER COUNTY COMMENTS ADD MODIFICATION NOTE



PWH ENGINEERING CIVIL ENGINEERING SITE DEVELOPMENT
 3583 SOUTH COBB DRIVE • SMYRNA, GA 30080 • PH: 770-433-8190 • FAX: 770-433-8190

ISSUE FOR PERMIT: 01-27-09
 JOB No. 08180 | SCALE: 1" = 40'

OWNER - DEVELOPER
Greater Atlanta Vedic Temple Society
 2189 SPENCERS WAY
 STONE MOUNTAIN, GA 30087
 PHONE: 678-662-6895

A NEW FELLOWSHIP BUILDING
Greater Atlanta Vedic Temple
 492 HARMONY GROVE ROAD LILBURN, GA 30247
 LL 115 - 6TH DISTRICT PARCEL 019A
 GWINNETT COUNTY, GEORGIA

EXISTING CONDITIONS
 C1